

**Webinar Two – Monday 15 September 2025**

# **Adventures Away from Home**



**UK YOUTH**

# Agenda

- About UK Youth
- Introduction to Adventures Away from Home
- Eligibility
- Key Dates
- Application Guidance
- FAQs – insights into the most asked questions
- Q&A

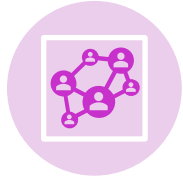
## Housekeeping

- This session will be recorded and published for reference
- Please keep yourself muted whilst you are not speaking
- Throughout please feel free to post questions in the chat and we will respond either as we go via the chat, or in the open Q & A session at the end.

UK YOUTH



# Who are UK Youth?



UK Youth is a leading charity that exists to ensure **all young people are equipped to thrive** and empowered to contribute at every stage of their lives.



We work with others to ensure that the **youth sector** is strengthened, supported, and that provision is youth-led, evidence-informed and delivers high-quality outcomes.



For over a century, UK Youth has been a charity for young people, supporting them to learn the skills and competencies they need for life.



As part of our commitment to young people for over 78 years UK Youth has operated an **Outdoor Centre at Avon Tyrrell**, set within the New Forest National Park



We know young people want more access to the outdoors and trips away from home and they are increasingly experiencing challenges that include poor mental health, stress, financial pressures, and unemployment.



One of our **strategic aims is to increase the accessibility and quality of outdoor learning for young people** across the UK so that it is 'widely utilised as an equal and valuable part of the ecosystem that supports young people'

**Young people sit at the heart of what we do, and AAFH provides young people who would otherwise face significant access barriers to experience a quality adventure away from home.**

**UK YOUTH**

# Available Support

## About the Fund

Delivered in collaboration with DCMS and funded by the UK Government, this programme ensures that young people from disadvantaged and under-represented backgrounds can access life-changing outdoor learning opportunities free of charge.

Funding is available for not-for-profit outdoor learning providers to deliver free experiences for young people aged 11–18 (and up to 25 for those with SEND) across England. Full details on eligibility and how to apply can be found in the FAQ document.

This exciting opportunity will enable young people to step outside, discover their potential, and build skills that last a lifetime. Through outdoor learning, participants will enjoy new experiences while developing confidence, resilience, social skills, and overall wellbeing.

The deadline to submit applications is 10am Friday 26 September 2025.



Apply Now

Application FAQs

Application Guidance

Please note the application guidance outlines all the questions within the application form and provides an overview of the scoring criteria we will be using to assess eligible applications.



To provide **equitable access** to information and support, we are unfortunately unable to offer one-to-one conversations at this stage.

We will be instead be holding **four webinars** to ensure a fair and transparent process. During these sessions we will outline the application process and respond to as many live or pre-submitted questions as possible.

Where possible we would kindly encourage you to email your questions in advance to [aafh@ukyouth.org](mailto:aafh@ukyouth.org) to allow us to provide a more comprehensive response.

All questions received will be anonymised and a summary of the response shared will be added to our FAQ document which will be updated throughout.

**Thank you** for your understanding, and please be assured of our sincere commitment to supporting all applicants throughout this process.

# Funding Overview

- The total funding for Adventures Away from Home 25/26 is **£4.7M**
- Adventures Away from Home is funded by UK Government and delivered in **partnership** between UK Youth and DCMS to provide **equitable access to outdoor learning** for young people facing significant barriers.
- The funding will be divided across **all nine regions of England**
- This exciting funding opportunity enables outdoor learning providers to deliver **free outdoor learning experiences** for young people aged 11–18 (or up to 25 for SEND).
- **The purpose** is to help young people build life and socio-emotional skills. By providing safe shared spaces and thoughtful programme design, these opportunities **support personal growth and wellbeing** that can lead to lasting benefits, including confidence, resilience, improved physical literacy and a lifelong connection to health and the outdoors.

The fund is open to a variety of delivery styles including:

- Arts,
- Sports
- Heritage
- Environment
- Farms



Experiential learning within an outdoor environment to support a young person's personal, social, and educational development, improve health and wellbeing, engagement with physical literacy, and environmental awareness.

The **outdoor space** in which learning takes place is an integral part of the **learning process**.

**Delivery window closes 31 March 2026**



# What does the funding Cover

- ✓ £70 per person for a one-day experience
- ✓ £170 for a one-night residential and
- ✓ £240 for a two-night residential

The funding is intended to **support the delivery of** Adventures Away from Home experiences, in line with the delivery guidance and shouldn't be used for other purposes.



# Organisation Eligibility

Organisations must:

- have been established for **2 years**
- be a Charity or **not for profit**
- be directly **delivering** their outdoor learning offer
- have access to eligible **young people** with whom they do not regularly engage
- be based in England
- be able to **demonstrate** that they are externally audited and or follow the DfE out of school criteria and have the policies and practices in place to keep young people safe
- have no less than **£5m** public liability and indemnity **Insurance**
- be willing and able to support our **evaluation** reporting requirements
- be able to offer post activity **signposting**

UK YOUTH



# Programme Delivery

Who owns the programme and how would a joint delivery model work?

The applicant **outdoor learning provider** must design and oversee the whole programme, but some parts can be outsourced.



## Examples of what is permitted:

- A residential provider could hire an **external specialist** to deliver a specific activity or catering services, as long as it is paid for **within** the available **budget** and does not make up the majority of the programme.
- Existing providers can also use **freelance** staff to increase delivery capacity.
- If you do outsource certain elements, you must still show how your organisation remains **accountable** for the programme

## What is not permitted:

- An organisation **cannot outsource** the entire programme.
- A **youth group** (for example) with no outdoor learning background or credentials cannot apply with the intention of taking their young people to a residential site or bringing in specialists to run the full programme for them.
- Delivery **outside** of England.



# Young People Eligibility

Adventures Away from Home exists to give under-represented and disadvantaged young people the chance to step outside their everyday lives, explore unfamiliar environments, and **build vital social, emotional, and life skills**.

Eligible young people should be **living in England** and facing significant barriers, working with groups from youth, education, and faith settings, including but not limited to:



The fund is primarily aimed at **reaching new young people** who may not have previously had access to outdoor learning opportunities.

i

However, we are also committed to providing a clear engagement pathway that allows young people to take the next step in their journey.

For example:

- a young person who initially took part in a one-day experience, perhaps because they weren't yet ready for a residential stay, should still have the opportunity to return and try something new as they grow in confidence.
- A young person who attends an arts club could attend a residential opportunity from the same provider.

# Experience Learn Develop - Principles



## **We are inclusive**

We want individuals and communities to have the opportunity to benefit from engagement in QUALITY-DRIVEN outdoor learning and show a respectful understanding for each other.



## **We respect the natural environment**

It is an integral part of our experience, learn, develop model and is a contributing factor in achieving meaningful outcomes and enables us to promote awareness of the current climate crisis.



## **We value the whole experience, our approach is centred around Experiential Learning.**

We apply the principles of YOUTH WORK and importance is placed on both the acquisition of skill or knowledge and the steps of the growth journey. We celebrate participation and encourage everyone to set goals to achieve their full potential and promote reflection to recognise individual achievements.



## **We value courage and curiosity**

We create a safe space where individuals can discover and challenge themselves, knowing that they will be supported and recognised for their own learning styles, strengths, character, and contribution



## **We strive for excellence**

To ensure our services and delivery meet the needs of our users WE LISTEN and are adaptable.



# Experience Learn Develop - Approach

Outdoor learning promotes the positive physical, social, emotional and mental health of young people; By combining knowledge, skills, attitudes, or behaviour change, and these can be demonstrated through the following examples (not an exhaustive list):



## Experience

- Gain new knowledge through experience
- Active experiences promote health, wellbeing & encourages lifelong positive physical literacy
- Enjoyment and fun, creating positive memories
- Safe environment / a sense of community
- Broadens knowledge of lived experiences
- Risk, delivered within a well-managed environment
- Independence
- The value of trust and trusted relationships
- Adventures Away from Home



## Learn

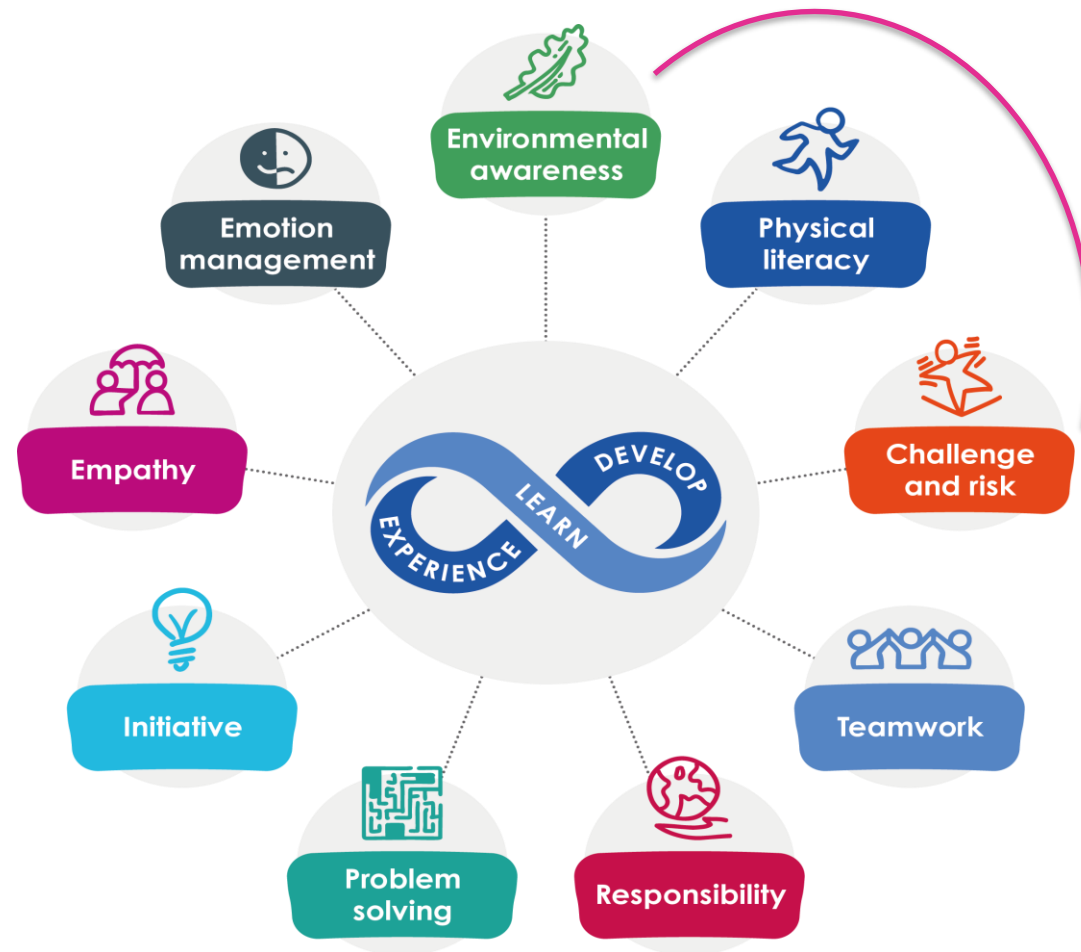
- About ourselves and others
- Empathy and to value and respect differences
- Understand the transferability of learning
- New skills
- Problem solving
- To recognise and celebrate achievement
- About the natural environment and its importance for sustainability and wellbeing
- Interpersonal skills and teamwork
- Emotional management



## Develop

- Essential life skills
- Empowerment and initiative
- Educational skills
- Character and citizenship
- Social skills and social confidence
- Resilience and responsibility
- Self-confidence to use their own voice, be themselves and make decisions
- An ability to self-evaluate risk
- Friendships, often outside their usual peer group(s)












# Socio-emotional skills



UK YOUTH



# Sample Programme – 1 night residential

<ul style="list-style-type: none"><li>• <b>Arrival</b></li><li>• <b>Aims and programme</b> (discussion to include how young people want to shape the programme)</li><li>• <b>Behaviour expectations</b></li><li>• <b>Icebreaker</b></li></ul>	<p><b>Session 1</b> Land based activity preferably team based.</p> <div><p>Problem solving</p></div> <div><p>Teamwork</p></div> <div><p>Initiative</p></div>	<p><b>Session 2</b> Off ground or personal challenge activity.</p> <div><p>Challenge and risk</p></div> <div><p>Physical literacy</p></div> <div><p>Responsibility</p></div>	<p>Dinner</p>	<p><b>Campfire</b> Reflections on the day Discussion on learning Changes /agreement on focus of day 2.</p>	<p>Breakfast</p>	<p><b>Session 3</b> Environmentally themed, focused on promoting green spaces</p> <div><p>Environmental awareness</p></div> <div><p>Initiative</p></div>	<p><b>Session 4</b> TBC team focused activity</p> <div><p>Initiative</p></div> <div><p>Problem solving</p></div> <div><p>Teamwork</p></div>	<p><b>Final review -</b> Feedback A celebration of achievements and transferable skills Reflections on expectations Evaluation (as needed) Future signposting</p>

# Key Dates



Planning & Pre Launch

Status Complete



Application Launch (8 – 26 Sep)

In Progress

Application Review (26 – 30 Sep)

Not started

Notification / Due Diligence / Contracts  
(1- 17 Oct)

Not Started

Delivery Phase Opens (13 Oct 2025)

Not Started

Initial 50% payment made  
(within 30 days of return of contract)

Not Started

Delivery phase closes (31 March 2026)

Not Started

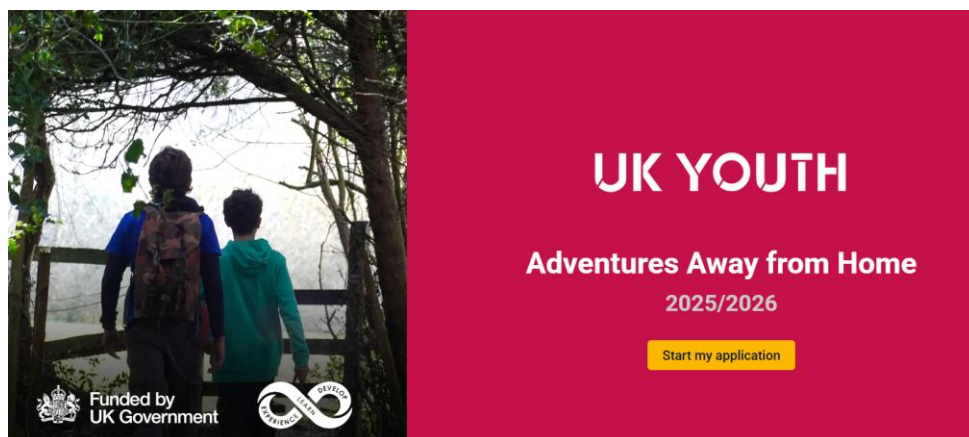
Final 50% payment made  
(within 30 days of completion)

Not Started

UK YOUTH



# Application Guidance



## Eligibility checks

Please tick each box to confirm eligibility

- ☐ 1. You have authority to make this application for funding on behalf of your organisation.
- ☐ 2. Applicant organisation is based in England.
- ☐ 3. Applicant organisation must be a charitable or not for profit organisation and can provide verification information if asked to do so.
- ☐ 4. Applicant organisation must have been in operation for at least 2 years and be able to demonstrate previous delivery experience, benefiting young people.
- ☐ 5. Applicant organisation can demonstrate safe working practices and provide a safe environment for young people to engage in outdoor learning.
- ☐ 6. Applicant organisation holds public liability and indemnity insurance of no less than £5M. Successful applicants must submit valid insurance certificates as part of the verification process.
- ☐ 7. Applicant organisation must comply with the Equality Act 2010, the General Data Protection Regulation 2018 and Data Protection Act 2018, Public Services (Social Value) Act 2012 and all other relevant statutory or regulatory requirements.
- ☐ 8. Applicant organisations if successful agree to complete all mandatory impact and evaluation documents, provide photos of delivery, (subject to photo permissions) and report any safeguarding and accident incidents.

Submit

You can **continue to edit** the form by toggling forward and backwards throughout and there is a full review screen before you press submit.

Once you have submitted your application form you should **receive an email with your responses**, if you don't and would like a copy, please let us know.

**Edits after submission** are only possible via email to [aafh@ukyouth.org](mailto:aafh@ukyouth.org) and must be received within the closing date.



# Evaluation

Youth Group Leader YP Registration	All young people
Young person's pre-/post-/6-month questionnaire.	% of participants
Young person's change stories: Stories of the most significant changes experienced by young people	% of participants
Quality assurance and learning site visits	% of delivery providers
Outdoor Learning Providers endline survey	1 per delivery provider
Outdoor Learning Provider focus group	Optional
Youth Group Leader endline survey	Sent to all leaders
Youth Group Leader interviews	Optional



There will be an **evaluation specific webinar** on 17 September at 2pm to offer further clarification and provide insight into the tools being used.





# FAQs

## Is there a minimum amount we can apply for?

**No, there are no limits**, but please ensure you have the capacity to deliver anything you apply for. We also want to ensure we get a good spread of providers across England and offering different experiences so we may not be able to fund your request in full.

## What about drop off?

As per previous rounds of funding there is an **agreed maximum variation** amount of **10%**. Outside of this agreed variance you would be expected to find replacement young people or contact us to discuss options.

## Why is this for established providers only?

We need to be able to verify the organisations at pace to **maximise your delivery window**. We have increasingly looked to expand the types of eligible organisations we can work with for this fund, but please do reach out before applying if you are in any way uncertain if you are eligible.

## What impact requirements will there be and how will we know what has been submitted?

We accept that the digital solution we used for the previous round of funding did not work as effectively as needed for either yourselves as providers or for us as grant administrators, so we have simplified the ask for this round of funding. Full details will be available at the **evaluation webinar** on the **17 September**.

# FAQs

## Is there any scope to extend the delivery timeline?

No, this is a **hard deadline** and cannot be extended.

## We have multiple centres can we submit multiple applications?

Only **one application** should be made **per organisation**, so if you have multiple centres or think multiple staff could apply, please do make sure you coordinate this in advance.

Where your organisational structure makes this challenging, centres may choose to submit applications per centre, however in this circumstance it is unlikely more than one centre per region would receive funding. All delivery must take place in England.

## What are your expectations around involving young people?

As a charity committed to young people, we strongly advocate engaging young people at every stage of your application and UK Youth commit to including young people on all our shortlisting panels.

If you have already consulted young people, then make sure you tell us about it as part of your application.

## Can the same young people access the day and residential options?

No, across each funding round you may only work with each young person once. This funding is designed to **break down barriers** to participation and is not designed for ongoing engagement with the same young people.

# FAQs



## We would like to deliver across a different duration, is this possible?

Based on previous rounds of AAfH funding we have **included** the option of a **one-night** stay as a number of providers highlighted the transition from day to a two-night residential was not suitable for every young person. Unfortunately to our ensure our **evaluation** reporting is consistent, one day, one night and two-night opportunities are the **only** permitted variations.

## What is the criteria for eligibility of young people?

- All the young people who receive funding must meet the eligibility criteria.
- They **must not be** in receipt of any other **funding** which covers the same opportunity.
- Groups may include funded and non-funded individuals, however the programme must meet AAfH criteria. Wherever possible, funded young people should form the majority of a group.
- While the **education sector** as a whole is not the primary focus of this funding, many **groups** within it will be **eligible**. - For **example**, those supporting **SEND** young people, targeted or **alternative provisions**, home education groups and those at risk of exclusion

We recommend **including** as much detail as possible in your application about why the **young people** you are targeting are experiencing **disadvantage or under-representation**.

It's essential that these are **new participants** who are not already scheduled to attend, and who would be unable to take part without this funding.

If applications in your region are particularly competitive, providing a clear and **compelling case** will help the shortlisting panel understand the level of need and make informed decisions

# FAQs

## Does it matter what times or days we run our programmes?

No, as long as you meet the **essential contact time** requirements these could be delivered at any time, especially over Ramadan and they can be delivered midweek and over weekends to match your availability. However, they do need to be **delivered in their entirety in one go**, for example a day could not be split over four 1-hr evening sessions and a two-night residential could not be delivered across two separate one-night stays. All delivery must also be complete by **31 March 2026**.

## Are young people who have received other funding in the past eligible?

Yes, young people who have been in receipt of HAF funding or may have previously done NCS would still be eligible, as long as they meet the eligibility criteria. **Note funding for other opportunities cannot be combined.**

## When will the discretionary fund open?

The Discretionary Fund is a targeted funding opportunity designed to support organisations in **addressing exceptional barriers** faced by specific young people or groups. It will launch after the main grant applications close to allow successful applicants to apply for additional "top-up" funding. Its purpose is to provide flexible, responsive support where it's most needed, helping drive equitable access. This funding is limited so will be targeted around **greatest need**.



# FAQs

## How do we access those living in poverty?

There are **multiple mechanisms** used to determine young people living in poverty, including **free school meals and IMD** (index of multiple deprivation). As with all other eligibility criteria there is **not a benchmark** set by this funding that young people are required to meet. We simply ask that you conduct a level of **due diligence** and are comfortable that you could **explain** how you have reached this decision. We also suggest **liaising** with trusted channels i.e., Youth Clubs, faith groups, or reaching out directly with schools in high deprivation areas. Throughout please respect safeguarding and dignity

## Can the funding be used to buy equipment to improve access?

No, the purchase of capital equipment is not permitted as part of this funding.

## Do we have to have our own accommodation?

This came up a few times on Friday so think we need a stronger consistent answer.

As an established outdoor learning provider, we would expect you to have a **defined operating area**. While you may not own the site, we would anticipate that you have a local agreement in place — for **example**, a Forest School might use nearby woodland with the landowner's permission. For **overnight accommodation**, we would expect you either to have your own facilities or to use established venues that form part of your **regular delivery** arrangements.

## If you do not get enough applications, will you extend this to organisations who are not charities or not for profits?

No, this will not change as this is part of our contractual agreements

# FAQs

## What will happen next if my organisation is successful?

Once successful applicant organisations have been **notified** (via all applicant details listed in your application) and you have informally accepted any agreed funding, we will carry out standard **due diligence** checks. This will require you to share a redacted bank statement and a copy of any external audit checks or policies. Following these checks we will issue a formal **funding agreement**.

Please ensure that the **authorised signatory** of the agreement (which can be an alternative staff member) **shares** the contractual commitments with those responsible for delivering the contract. This is essential to ensure the fund is used solely for its **intended purpose** and that the commitments set out in your application are met.

## In case of maximum / minimum asks for funding would you prefer or consider scalable models and allocate accordingly?

We have outlined the **application** process and provided **guidance** on how to respond to the questions in the application document. You are welcome to answer these questions in **your own way**, explaining your approach and funding request as you see fit. All applications will be **assessed fairly**, and funding will be awarded to those that clearly meet the fund's requirements. However, we also welcome **creativity**, provided it remains within the boundaries of the fund.

# Questions

# Building Connections

UK Youth Network > 9,000 youth organisations

9 Regions of England

If you are not directly eligible to apply and would like to be connected to a centre so your young people can access this opportunity, please email us

If you are eligible and would like us to connect you to youth organisations in your area please email us

[aafh@ukyouth.org](mailto:aafh@ukyouth.org)





# Adventures Away from Home Fund

**APPLICATIONS CLOSE**

10am Friday 26th  
September 2025

**The £4.7M Fund**

Thank you for your time today, we will update FAQs as quickly as possible.

Please do reach out to us at [aafh@ukyouth.org](mailto:aafh@ukyouth.org) for any support and we hope to receive your application.